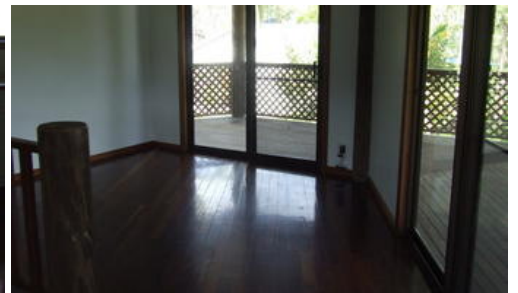
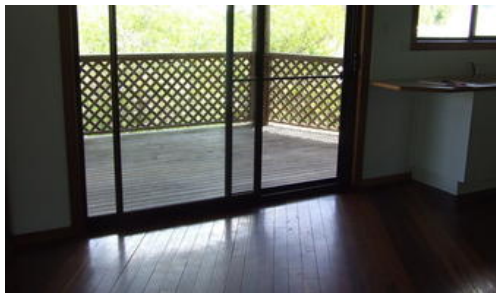




2 Edmondson Close, Cardwell



3 2 2

Located only 150 metres to the redeveloped Coral Sea Memorial park and Cardwell foreshore this three bedroom pole home suits a family situation, especially with one of the bedrooms located on the ground floor with its own bathroom. Upstairs, the wrap around balcony ensures the exceptional views and cooling sea breezes are enjoyed. Backing onto a nature reserve and strategically located just 1.5 kilometres to the Meunga Creek boat ramp, this home is a must to inspect.

The above information provided has been furnished to us by the vendor/s. We have not verified whether or not that information is accurate and do not have any belief in one way or the other in its accuracy. We do not accept any responsibility to any person for its accuracy and do no more than pass it on. All interested parties should make and rely upon their own inquiries in order to determine whether or not this information is in fact accurate.

<b>Price</b>	\$349,000
<b>Property Type</b>	residential
<b>Property ID</b>	74
<b>Land Area</b>	800 m2

Lindsay Hallam - 0419 647 510

Cardwell  
 65 Victoria Street Cardwell QLD  
 4849 Australia  
 07 4066 8700

